

WAVE Vanity
3-5022-xx

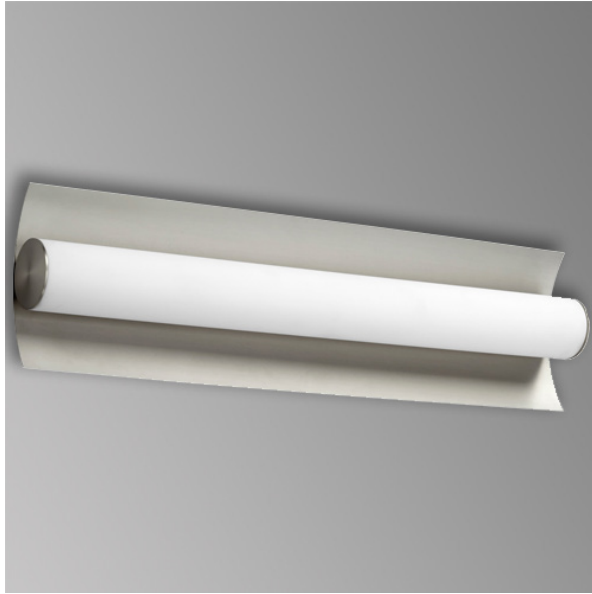
oxygen

FIXTURE TYPE _____

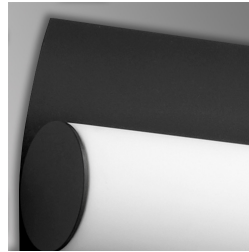
LOCATION _____

PROJECT _____

DATE _____



-24 Satin Nickel



-15 Black

LIGHT SOURCE 2 x 9W LED, 3000K, CRI 90

LUMINAIRE POWER 23W at 120V

RATED LIFE 60000 hr RL

LUMEN OUTPUT Delivered: 1353 lm (LM-79)

INPUT VOLTAGE 120V, 60Hz

DRIVER OUTPUT 700mA, 30W max

DIMMING TRIAC Dimming

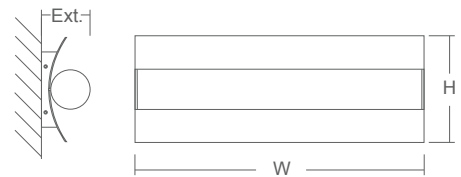
CONSTRUCTION Plated Steel and Acrylic

DIFFUSER - Matte White Acrylic

FINISHES Black (-15), Satin Nickel (-24)

MOUNTING 4" Octagonal J-Box*
 4"x4" Square J-Box* with single device mud ring
 *Deep J-Box (Required to house driver)

STANDARDS ETL Dry/Damp listed, ADA Compliant, Conforms to UL STD 1598,
 Certified CAN/CSA, STD C22.2 No 250.0.



DIMENSIONS

W: 23.25"

H: 6.25"

Ext: 3.00"

M.C: 3.125" From Top of Fixture

Order example for standard fixture:

3-5022-xx (x-Voltage - xxx-Sequence # - xx-Finish)

